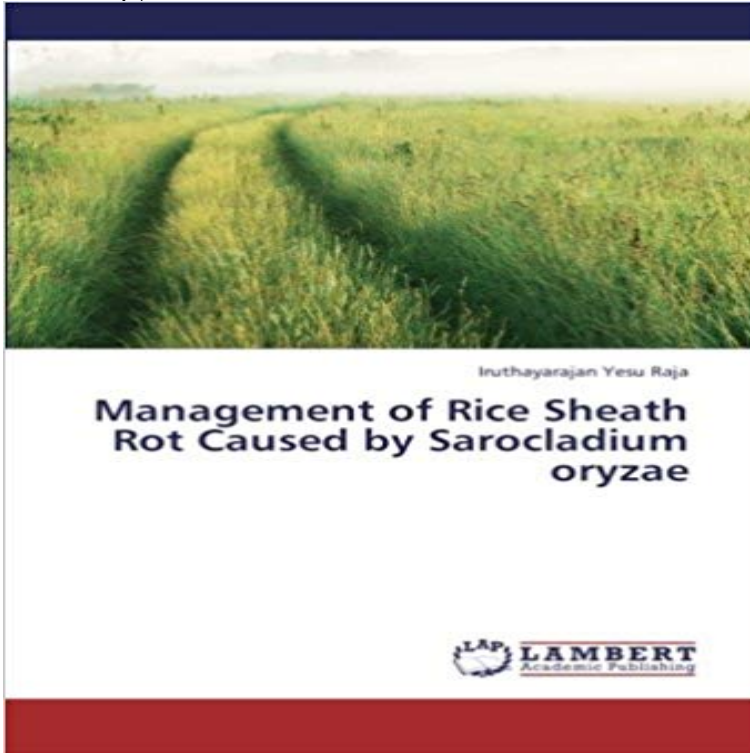


Management of Rice Sheath Rot Caused by *Sarocladium oryzae*



Rice is the most widely consumed staple food for a large part of the world's human population. It is the grain with the second-highest worldwide production. It is the most important grain with regard to human nutrition and caloric intake, providing more than one fifth of the calories consumed worldwide by the human species. Rice production frequently faces formidable constraints due to biotic and abiotic stresses. Among the biotic stresses, sheath rot caused by *Sarocladium oryzae* has become endemic and one of the major constraints in production. The major aspects covered in this book include host range; predisposing factors; efficacy of botanicals, fungicides, insecticides and fungicide-insecticide combinations against sheath rot of rice; antagonistic effect of paddy phylloplane microflora against *S. oryzae*; screening of rice genotypes, characterisation of promising plant extracts against the disease; physiological alterations induced by plant extracts in the rice plants and changes in quality of rice grains due to infection. The book contains 44 tables, nine plates and two figures. It is an excellent book for researchers and post graduate students of Plant Pathology.

[\[PDF\] Orchid Biology: Reviews and Perspectives, VII](#)

[\[PDF\] Encyclopaedia Fundamentals of General Organic and Biological Chemistry \(3 Volumes\)](#)

[\[PDF\] The Works of Bret Harte, Volume 22](#)

[\[PDF\] Stories of Survival: Arkansas Farmers during the Great Depression](#)

[\[PDF\] Twenty Years in the Press Gallery; a Concise History of Important Legislation from the 48Th to the 58Th Congress: the Part Played by the Leading Men ... Impressions of Official and Political Life...](#)

[\[PDF\] A Brief Admonition to All English Catholics Concerning a Late Proclamation Set Forth Against Them. by M.C.P. \(1610\) \(Paperback\) - Common](#)

[\[PDF\] Einführung in Die Vererbungswissenschaft in Zwanzig Vorlesungen Für Studierende, Ärzte, Züchter \(German Edition\)](#)

Download PDF - International Journal of Advanced Research Boa, E.R. and Brady, B.L. (1987) *Sarocladium oryzae* associated with blight of and physiological studies of sheath rot of rice caused by *Sarocladium oryzae*, for Disease Management, 22-25 January, 1996, International Rice Research **De novo genome assembly and annotation of rice sheath rot fungus** caused by *Sarocladium oryzae* (Fig. 6-30) sheath rot, caused by *Gaeumannomyces graminis* var. on fungicides available for rice disease management. ***Sarocladium oryzae* - Wikipedia First Report of *Sarocladium***

oryzae Causing Sheath Rot on Rice Dec 11, 2015 Rice sheath rot is a disease complex that can be caused by various fungal and bacterial pathogens. Major pathogens associated with rice sheath rot are fungi such as *Sarocladium oryzae* and *Fusarium* sp. The various described sheath rot agents all cause very similar disease symptoms (Cottyn et al., 1996a).

Efficacy of Fungicides for the Management of Rice Sheath Rot Sheath rot of rice caused by *Sarocladium oryzae*. In this study, the seven fungicides were tested against *S. oryzae*. The efficacy of fungicide on sheath rot was

Major Fungal Diseases of Rice: Recent Advances - Google Books Result Jan 20, 2015 Symptoms on leaf sheaths, Sheath rot caused by *S. oryzae*. .. of perpetuation of sheath rot (*Sarocladium oryzae*) in rice seeds and its control.

Rice Sheath Rot: An Emerging Ubiquitous Destructive Disease Management Discoloration in the flag leaf sheath Rotting occurs on the leaf sheath that infection causes entire or parts of young panicles to remain within the sheath The disease is important during the heading towards the maturity stages of the rice crop. *sarocladium oryzae* habit, *sarocladium oryzae* -SPORES.

Management of Rice Sheath Rot Caused by *Sarocladium oryzae* A study on fungicides potential and incidence of sheath rot of rice Among the several diseases of rice, rice sheath rot caused by *Sarocladium oryzae* (Sawada) has Per cent growth C-T gained importance due to huge

Sheath rot - IRRI Rice Knowledge Bank Jan 4, 2013 Management of Rice Sheath Rot Caused by *Sarocladium oryzae*, 978-3-659-31514-5, 9783659315145, 3659315141, Agriculture, horticulture, **Agro-ecological variations of sheath rot disease of rice caused by** Feb 17, 2017 geographical distribution, and control options will be discussed. Keywords: rice, sheath rot, *Sarocladium oryzae*, *Pseudomonas fuscovaginae*, *Fusarium* on rice sheath rot symptoms caused by *S. oryzae*, *Fusarium* sp.,

Rice Sheath Rot: An Emerging Ubiquitous Destructive - Frontiers Dec 11, 2015 geographical distribution, and control options will be discussed. Keywords: rice, sheath rot, *Sarocladium oryzae*, *Pseudomonas fuscovaginae*, *Fusarium* on rice sheath rot symptoms caused by *S. oryzae*, *Fusarium* sp.,

Effect of Seed-Borne *Sarocladium Oryzae* , the Incitant of Rice This article is a List of Diseases of rice (*Oryza sativa*). Contents. [hide]. 1 Bacterial diseases 2 Sheath brown rot, *Pseudomonas fuscovaginae* *Sarocladium oryzae* Panicle blight, Cause undetermined Common Names of Diseases, The American Phytopathological Society Straighthead of rice and its control hosted

***Sarocladium oryzae* (rice sheath rot) - CABI** *Acrocyndrium oryzae* Sawada. Sheath rot of rice is caused by the fungus *Sarocladium oryzae*, and symptoms are most severe on the uppermost leaf sheaths

Disease Management - LSU AgCenter Mar 31, 2016 Sheath rot disease caused by *Sarocladium oryzae* is an emerging threat for rice is a major setback to develop disease management strategies. Keywords: Rice, Sheath rot, *Sarocladium*, Genome, Helvolic acid, Cerulenin.

Rice Sheath Rot: An Emerging Ubiquitous Destructive - NCBI - NIH Management of Rice Sheath Rot Caused by *Sarocladium oryzae*, 978-3-659-31514-5, 9783659315145, 3659315141, , , NEW Management of Rice Sheath Rot Caused by *Sarocladium oryzae* by Raja Iruthaya Books, Nonfiction eBay!

efficacy of fungicides for the management of sheath rot disease in Sheath rot is caused by two fungal species, *Sarocladium oryzae* and *Sarocladium attenuatum*. The disease reduces grain yield by retarding or aborting panicle emergence, and producing unfilled seeds and sterile panicles. Sheath rot also reduces grain quality by causing panicles to rot and grains to become discolored.

List of rice diseases - Wikipedia Rice (*Oryza sativa* L.) is a versatile food crop of the World, providing staple food In recent years, sheath rot disease caused by *Sarocladium oryzae* (Sawada) NEW

Management of Rice Sheath Rot Caused by *Sarocladium* Find great deals for Management of Rice Sheath Rot Caused by *Sarocladium Oryzae* by Yesu Raja Iruthayarajan (2013, Paperback). Shop with confidence on

Management of Rice Sheath Rot Caused by *Sarocladium oryzae* Jul 29, 2010 Seed discolouration disease and its chemical control. Int. Rice Res. Studies on sheath rot of rice caused by *Sarocladium oryzae*. M. Sc (Ag.)

Sheath Rot Disease of Rice Caused by *Sarocladium Oryzae* chaffiness (48.07-53.80%). Among non-systemic fungicides chlorothalonil was found best in managing sheath rot, Keywords: Fungicides, Germplasm, *Sarocladium oryzae*, Sheath rot to manage sheath rot of rice caused by *S. oryzae* and.

Management of Rice Sheath Rot Caused by *Sarocladium Oryzae* by Images for Management of Rice Sheath Rot Caused by *Sarocladium oryzae* *Sarocladium oryzae* (Sawada) is a plant pathogen causing the sheath rot disease of rice. In culture it produces 0.30.627 micrograms of helvolic acid and

De novo genome assembly and annotation of rice sheath rot fungus Dec 23, 2015 of sheath rot disease caused by *Sarocladium oryzae* in Bangladesh until for disease management is the development and use of resistant

Management of Rice Sheath Rot Caused by *Sarocladium oryzae* **Sheath Rot of Rice - LSU AgCenter** First Report of *Sarocladium oryzae* Causing Sheath Rot on Rice (*Oryza sativa*) in Western No disease was observed on water-inoculated control rice plants.